

# meria

---

Lounge



kwalu®

Designed to Last®

# meria

Lounge

A throwback to the neoclassical era, the Meria Lounge chair is tailored luxury. The cushion is removable for ease of cleaning. The formal stately back, the classic legs and the standard nail head trim all make the Meria stand out as an icon to style.



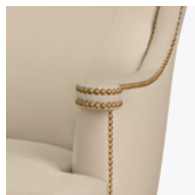
Model: MER01  
33.5W 35D 45H 23.5SW 19.5SD 19SH 25AH

## Features



### Durable Finish

Kwalu's solid surface (1/8" thick) proprietary finish doesn't have any of the drawbacks of wood. The frames are moisture impervious, graffiti-resistant, easy to clean and maintenance-free.



### Easy to Grasp Handgrip

Extended arm creates easy to grasp handgrip.



### Removable Seat Deck

Removable seat deck prevents buildup of debris and provides for easy maintenance.



### 10 Year Warranty

We offer a 10 Year Performance Warranty on both construction and finish, so the product is guaranteed to stay looking like new for 10 years.

## Statement of Line



**MER01**  
33.5W 35D 45H  
25AH

**kwalu** | Designed to Last®

6160 Peachtree Dunwoody Rd. Building C, Atlanta, GA 30328

1-877-MY-KWALU [kwalu.com](http://kwalu.com)

